

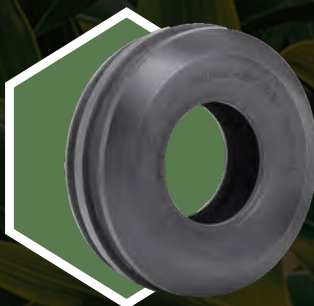


CROP MAX

FARM TESTED. FIELD PROVEN.

TIRE CATALOG

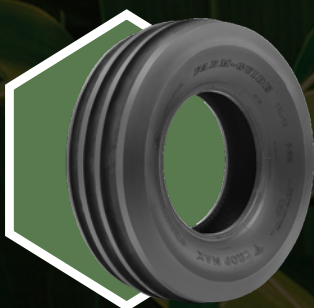




FARM GUIDE

FRONT FARM F-2

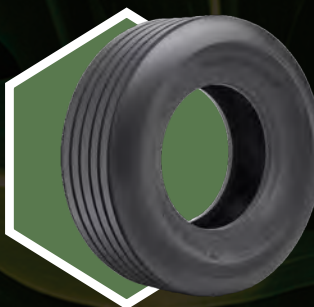
The Farm Guide F-2 features a wide, 3-rib, self cleaning tread design that is ideal for all types of farming conditions. The high density rubber compounds provide excellent protection against stubble related wear and damage from rough surface conditions.



FARM GUIDE

FRONT FARM F-2M

With its four rib design, advanced compounding to resist stubble puncture, and high flotation to reduce soil compaction, the Farm Guide F-2M is a durable, side-slip resistant, front tractor tire designed to hold up season after season.



FARM WAGON

IMPLEMENT I-1

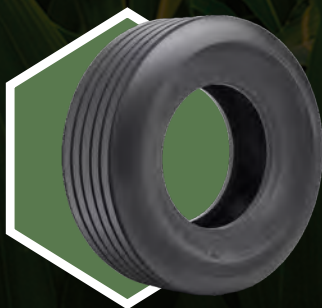
Designed for free-rolling wheels on implements, the Farm Wagon I-1 features shock-fortified nylon chord body to resist impacts. The high density rubber compound is cut resistant to help reduce downtime and makes "no-till" no problem.



FARM TORQUE

REAR FARM R-1

Built to handle high torque tractor applications, the Farm Torque R-1 features a heavy bead bundle and an advanced reinforced bar design that limits flex, and delivers more working hours. The tough tread bars, thickly compounded sidewall rubber, and ozone resistant compound provide extra durability.



HIGHWAY SERVICE

HIGHWAY SERVICE F-1

DOT certified for highway travel, the Highway Service F-1 is ideal for use in applications that require road access. Designed for free-rolling wheels on implements, the Farm Wagon F-1 features shock-fortified nylon chord body to resist impacts. The high density rubber compound is cut resistant to help reduce downtime and makes "no-till" no problem.



FARM TORQUE

REAR FARM G-1W

Designed for high torque compact tractor applications, the Farm Torque G-1W features an optimized reinforced deep lug design that limits tread flex and delivers long lasting durability and superior traction. Suitable for multiple field conditions including soft soils.



IRRI-PRO

IRRIGATION R-1

The extra-deep tread of the Irri-Pro Irrigation R-1 provides a larger footprint area for reduced soil compaction and better traction in mud. The self-cleaning tread design and ozone resistant sidewall compound provide added wear protection against the elements.





SIZE	LI/SR	PLY	TT/TL	TD	OD	SW	RIM WIDTH	MAX LOAD @ PSI	STOCK #
4.00-15	62/A8	4	TT	15	24.1	4.4	3.00	585@52	CM5752
5.00-15	75/A8	6	TL	21	26.1	5.1	3.00	855@56	CM5254
7.5L-15	93/A8	6	TT	19	29.4	8.2	6.00	1430@44	CM5762
9.5L-15	102/A8	8	TL	32	29.4	9.5	7.00	1870@48	CM5275
11L-15	106/A8	8	TT	35	32.0	11.0	8.00	2090@44	CM5782
5.50-16	82/A8	6	TL	18	28.1	5.9	4.00	1050@56	CM3099
6.00-16	85/A8	6	TL	25	29.1	6.3	4.00	1140@52	CM3104
6.50-16	88/A8	6	TL	25	30.0	6.8	4.50	1230@48	CM3109
7.50-16	99/A8	8	TL	30	31.8	8.0	4.50	1710@56	CM3115
10.00-16	110/A8	8	TL	34	35.2	10.8	8.00	2340@44	CM3119
11.00-16	114/A8	8	TL	38	38.1	12.4	10.00	2600@40	CM3121
4.00-19	93/A8	4	TL	13	28.2	4.4	3.00	715@52	CM5135



SIZE	LI/SR	PLY	TT/TL	TD	OD	SW	RIM WIDTH	MAX LOAD @ PSI	STOCK #
9.5L-15	102/A8	8	TL	25	30.8	9.5	7.00	1870@48	CM5550
11L-15	106/A8	8	TL	25	32.0	11.0	8.00	2090@44	CM5600
10.00-16	114/A8	10	TL	27	35.2	10.8	8.00	2600@52	CM5605
11.00-16	118/A8	10	TL	27	38.1	12.4	10.00	2910@48	CM5620
14L-16.1	127/A8	12	TL	35	38.8	14.0	11.00	3860@52	CM5560



SIZE	LI/SR	PLY	TT/TL	TD	OD	SW	RIM WIDTH	MAX LOAD @ PSI	STOCK #
9.5L-14	111/B	8	TL	8	29.2	9.5	7.00	2400@44	CM5216
11L-14	112/B	8	TL	11	29.6	11.0	8.00	2470@36	CM5217
5.90-15	85/B	4	TL	7	26.2	6.1	4.50	1140@36	CM5218
6.70-15	97/B	6	TL	9	27.7	6.7	4.50	1610@44	CM5219
7.60-15	106/B	8	TL	8	28.9	7.6	5.50	2090@52	CM5207
9.5L-15	121/B	12	TL	8	30.2	9.5	7.00	3200@64	CM5222
9.5L-15	112/B	8	TL	8	30.2	9.5	7.00	2470@44	CM5221
11L-15	121/B	12	TL	8	30.6	11.0	8.00	3200@52	CM5230
11L-15	113/B	8	TL	8	30.6	11.0	8.00	2540@36	CM5229
12.5L-15	123/B	10	TL	8	32.1	12.3	10.00	3420@44	CM5243
11L-16	115/B	8	TL	11	31.6	11.0	8.00	2680@36	CM5248
12.5L-16	128/B	12	TL	11	33.4	12.5	10.00	3960@52	CM5250
14L-16.1	127/B	8	TL	12	37.0	14.0	11.00	3860@32	CM5252
16.5L-16.1	138/B	10	TL	13	40.3	16.5	14.00	5200@36	CM5253
31X13.50-15	120/B	10	TL	12	30.8	13.8	10.00	3080@60	CM5246



HIGHWAY SERVICE

HIGHWAY SERVICE F-1

SIZE	LI/SR	PLY	TT/TL	TD	OD	SW	RIM WIDTH	MAX LOAD @ PSI	STOCK #
9.5L-15	120/J	10	TL	12	30.2	9.5	7.00	3086@75	CM5790
11L-15	128/J	12	TL	12	30.6	11.0	8.00	3960@90	CM5794
12.5L-15	134/J	12	TL	12	32.4	12.5	10.00	4674@90	CM5798



FARM TORQUE

REAR FARM G-1W

SIZE	LI/SR	PLY	TT/TL	TD	OD	SW	RIM WIDTH	MAX LOAD @ PSI	STOCK #
7-14	80/A8	6	TL	20	27.2	7.2	6.00	990@36	CM5750
7-16	84/A6	6	TT	31	18.6	7.2	6.00	1100@36	CM5655
7-16	84/A6	6	TL	31	29.2	7.2	6.00	1100@36	CM5652
8-16	91/A6	6	TL	31	31.1	8.3	6.00	1355@28	CM5653
8-16	91/A6	6	TT	33	31.3	8.3	6.00	1355@28	CM5654



IRRI-PRO

IRRIGATION R-1

SIZE	LI/SR	PLY	TT/TL	TD	OD	SW	RIM WIDTH	MAX LOAD @ PSI	STOCK #
11.2-24	106/A8	6	TT	35	43.4	11.2	10.00	2090@26	IP5551
11.2-24	106/A8	6	TL	35	43.4	11.2	10.00	2090@26	IP5565
11.2-24	113/A8	8	TL	35	43.4	11.2	10.00	2540@36	IP5567
14.9-24	119/A8	6	TL	39	49.8	14.9	13.00	3000@20	IP5556
14.9-24	119/A8	6	TL	39	49.8	14.9	13.00	3000@20	IP5569
14.9-24	124/A8	8	TL	39	49.8	14.9	13.00	3520@26	IP5571
11.2-38	113/A8	6	TT	40	57.4	11.2	10.00	2540@26	IP5560
11.2-38	113/A8	6	TL	40	57.4	11.2	10.00	2540@26	IP5574

NAME	SIZE	LI/SR	PLY	TT/TL	TD	OD	SW	RIM WIDTH	MAX LOAD @ PSI	STOCK #
R-1 Duramax AG	6.00-14	81/A8	6	TT	18	26.5	6.6	4.00	1020@52	CM5260
R-1 Duramax AG	8-18	85/A6	4	TT	34	33.1	8.3	6.00	1140@18	CM8874
R-1 Duramax AG	12.4-24	117/A8	8	TT	63	45.6	12.4	11.00	2830@32	CM8861
R-1 Power Grip	9.5-24	102/A8	6	TT	48	41.3	9.5	8.00	1870@30	CM5810
R-1 Power Grip	9.5-24	109/A8	8	TT	48	41.3	9.5	8.00	2200@32	CM5820



SIZE	LI/SR	PLY	TT/TL	TD	OD	SW	RIM WIDTH	MAX LOAD @ PSI	STOCK #
8.3-24	106/A8	8	TT	35	39.1	8.3	7.00	2095@28	CM5602
11.2-24	106/A8	6	TT	40	43.4	11.2	10.00	2090@26	CM5610
11.2-24	106/A8	6	TL	40	43.4	11.2	10.00	2090@26	CM5611
11.2-24	113/A8	8	TL	40	43.4	11.2	10.00	2540@36	CM5612
11.2-24	113/A8	8	TT	40	43.4	11.2	10.00	2540@36	CM5613
12.4-24	117/A8	8	TT	44	45.6	12.4	11.00	2830@32	CM5614
12.4-24	117/A8	8	TL	44	45.6	12.4	11.00	2830@32	CM5616
14.9-24	119/A8	6	TT	47	49.8	14.9	13.00	3000@20	CM5618
14.9-24	124/A8	8	TT	47	49.8	14.9	13.00	3520@26	CM5619
14.9-24	119/A8	6	TL	47	49.8	14.9	13.00	3000@20	CM5617
14.9-24	124/A8	8	TL	47	49.8	14.9	13.00	3520@26	CM5621
16.9-24	129/A8	8	TT	50	52.5	16.9	15.00	4080@24	CM5710
11.2-28	108/A8	6	TT	40	47.4	11.2	10.00	2200@26	CM5622
11.2-28	108/A8	6	TL	40	47.4	11.2	10.00	2200@26	CM5624
11.2-28	115/A8	8	TT	40	47.4	11.2	10.00	2680@36	CM5623
11.2-28	115/A8	8	TL	40	47.4	11.2	10.00	2680@36	CM5625
12.4-28	113/A8	6	TT	44	49.6	12.4	11.00	2540@24	CM5627
12.4-28	119/A8	8	TT	44	49.6	12.4	11.00	3000@32	CM5626
12.4-28	113/A8	6	TL	44	49.6	12.4	11.00	2540@24	CM5632
12.4-28	119/A8	8	TL	44	49.6	12.4	11.00	3000@32	CM5629
13.6-28	122/A8	8	TT	45	51.6	13.6	12.00	3300@28	CM5628
13.6-28	122/A8	8	TL	45	51.6	13.6	12.00	3300@28	CM5633
14.9-28	126/A8	8	TT	47	53.8	14.9	13.00	3740@26	CM5630
14.9-28	126/A8	8	TL	47	53.8	14.9	13.00	3740@26	CM5635
16.9-30	132/A8	8	TT	48	58.5	16.9	15.00	4400@24	CM5631
18.4-30	140/A8	10	TT	48	61.1	18.4	16.00	5520@26	CM5634
18.4-34	143/A8	10	TT	38	65.1	18.4	16.00	6000@26	CM5638
18.4-34	137/A8	8	TT	38	65.1	18.4	16.00	5080@20	CM5639
13.6-38	127/A8	8	TT	50	61.6	13.6	12.00	3860@28	CM5739
15.5-38	133/A8	8	TT	40	61.8	15.5	14.00	4540@26	CM5640
18.4-38	145/A8	10	TT	48	69.1	18.4	16.00	6400@26	CM5650
18.4-38	139/A8	8	TT	48	69.1	18.4	16.00	5360@20	CM5651
20.8-38	148/A8	10	TT	50	72.2	20.8	18.00	6950@22	CM5641

NAME	SIZE	SR	PLY	TT/TL	TD	OD	SW	RIM WIDTH	MAX LOAD @ PSI	STOCK #
Irri-Pro ND R-1	11.2-24	A8	6	TT	43	43.4	11.2	10.00	2720@26	IP6000
Irri-Pro ND R-1	11.2-24	A8	6	TL	43	43.4	11.2	10.00	2720@26	IP7000
Irri-Pro ND R-1	14.9-24	A8	6	TT	47	49.8	14.9	12.00	6400@26	IP6010
Irri-Pro ND R-1	14.9-24	A8	6	TL	47	49.8	14.9	12.00	6400@26	IP7010
Irri-Pro ND R-1	11.2-38	A8	6	TT	43	57.4	11.2	10.00	4400@24	IP6020
Irri-Pro ND R-1	11.2-38	A8	6	TL	43	57.4	11.2	10.00	4400@24	IP7020



TIRES COVERED BY THIS WARRANTY

This limited warranty applies to CropMax Bias Ag tires. This warranty applies only to tires purchased after January 1, 2023 OR with a Serial Date with year '23. Tires purchased before that date are subject to previous published warranties.

WHAT IS WARRANTED AND FOR HOW LONG

This warranty is effective only for tires for which claims are made within 5 years (60 months) of the date of production, based on the production date indicated by the tire serial number.

- A) **Material and Workmanship Warranty.** All CropMax branded Bias tires are warranted against defects in workmanship and materials for the life of the original usable tread. The original usable tread is defined as the total original tread depth less 2/32" for tires with DOT codes. Tires with 2/32" or less remaining tread depth in any groove are considered worn out by the U.S. Department of Transportation. For tires not required to have a DOT code, the original usable tread is defined as the total original tread depth. Tire adjusted under the terms of this warranty will be credited at the current wholesale price, less the percentage of the original usable tread remaining on the tire.

FIELD HAZARD AND STUBBLE DAMAGE

If a tire becomes unserviceable due to a Field Hazard or Stubble Damage within the first three (3) years of purchase date, use the chart below to understand the coverage.

CONDITION	YEAR 1 CHARGE	YEAR 2 CHARGE	YEAR 3 CHARGE
Field Hazard	25	50	75
Stubble Damage	25	50	75

WHAT IS NOT COVERED (EXCLUSIONS)

- A) Tires on any vehicles registered and normally used outside the United States and Canada.
B) Tires branded "Blemish", "NA" or having the DOT number removed OR disfigured.
C) Tires presented for warranty claim by other than the original purchaser. This warranty is not transferable.
D) Tires transferred to another vehicle from the one upon which they were originally installed.
E) A tire whose failure is related to any previous damages and/or repairs beyond coverage period.
F) Any cost of tire repair is not covered by this warranty and will be borne solely by the tire owner.

OWNER'S OBLIGATIONS

- A) At the time of purchase, the tire(s) must be properly installed, balanced, and air pressure set to the vehicle manufacturer's recommendation. At least monthly the owner must check air pressure (when tires are cool) with an accurate air gauge and reinflate to recommended level.
B) All warranty claims must be presented to an authorized American Omni Tire dealer.
C) American Omni dealer must fill out the AOT Warranty Claim Form completed with all necessary information regarding the tire claim.
D) You must pay any costs related to the new tire, less credits and including charges for mounting and balancing.

LEGAL RIGHTS

Any implied warranties, including warranties of merchantability and fitness for a particular purpose, shall be limited in duration to the above period. To the extent permitted by law, American Omni tire shall not be responsible for incidental or consequential damages, such as loss of use of the tire or the vehicle on which it is used, inconvenience, or commercial loss. Some states do not allow limitation on how long an implied warranty lasts, or the exclusion or limitation of incidental or consequential damages, so the above limitations or exclusions may not apply to you. This limited warranty for American Omni brand tire gives you special legal rights, and you may also have other rights, which vary from state to state. This is the only express warranty applicable to American Omni tires, and it supersedes the terms of any previous warranty. American Omni neither assumes, nor authorizes anyone to assume for it, any other warranty.



AMERICAN OMNI TRADING COMPANY

📍 1221 Park West Green Drive | Katy, TX 77494

☎ 281-600-8743

🌐 american-omni.com/transmax

